



HydroPURE



# HydroPURE®

## Series **Fact Sheet**

**HydroPURE** is a range of mobile trailer mounted water treatment systems, available alone, in parallel or in series with other systems from the **Ecolutia** mobile fleet. The **HydroPURE** Series features the **HydropurIX**® for demineralised water production and the **HydropurRO**® for reverse osmosis treatment. Designed specifically as a trailer mounted solution, affording fast delivery times to meet your emergency water requirements.



The **HydroPURE** Series is a major step forward in trailer mounted emergency water solutions, offering industry leading flow rates and larger capacities than any other products available in the mobile water treatment market. Remaining operational is vital to any business and having a reliable emergency water treatment service partner is critical. **Ecolutia** is that partner and the **HydroPURE** Series is the cost effective solution.

The ion exchange based system within the Series is known as the **HydropurIX**. It is a robust, yet flexible system, able to produce demineralised water swiftly once on site. The **HydropurIX** can be loaded in multiple configurations to suit the application needs. The large capacity, as

a result of a very high resin load, enables the **HydropurIX** to save time and money through reduced transport costs; versus lower capacity systems in the market that require more trailer exchanges. Additionally, the higher capacity reduces the carbon footprint and off-site regeneration eliminates chemical use and waste water production on site.

The **HydropurIX** advanced design incorporates several further beneficial features. A remote monitoring capability allows our technical support team to access data, monitor alarms and control the system. Automatic shutdown features maintain product water quality guarantees and shield against temperature spikes, excess pressures and feed water issues. All systems receive an in depth Quality Control (QC) process prior to dispatch; ensuring reduced rinse times and speedy commissioning upon arrival, saving valuable time. **Ecolutia's** aim is to dispatch systems from the regeneration facility within two hours of receiving an order and to have systems commissioned and operational on site within an hour of arrival.

Not only do we provide equipment within short timescales, but in addition, **Ecolutia's** team come as part of that package. This is a key part of our service philosophy and the reason for **Ecolutia's** success in customer satisfaction and repeat business. Day or night, our team of experienced university graduated Field Service Engineers (FSE) will commission, operate and maintain the **HydropurIX** whilst on site. The FSE is equipped with a '**Project Execution Plan**' and will arrive fully briefed with all the project details, understanding the expectations and project requirements.

### HydropurIX Benefits

Largest mobile demineralisation capacity available in the mobile water treatment market

High flow rates up to 130 m<sup>3</sup>/h of demin water

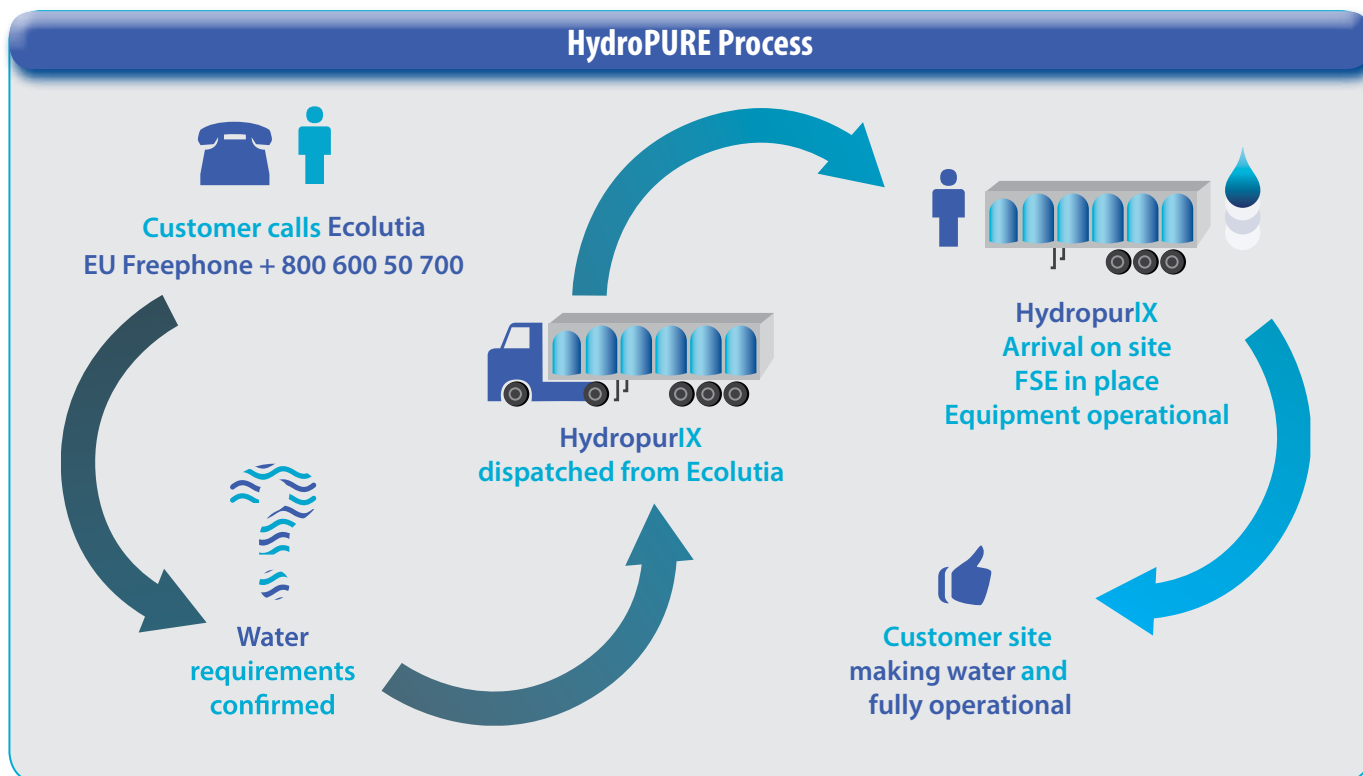
Demin water production of <0.1µS/cm 10ppb silica

Off site resin regeneration

No on site waste water production

## HydroPURE Series Typical Applications

- Rapid response emergency water treatment requirement
- Demin plant failure or breakdown
- Delays in new plant commissioning
- Delays in plant maintenance schedule/outage
- Off site regeneration requirement
- Ion exchange polishing on long term outsourced projects
- Varying feed water quality
- Seasonal or peak water demand changes
- Planned outages for equipment repair
- Start-ups
- Change in raw water sources
- Sudden changes in effluent specifications
- Use of alternative seasonal sources



HydropurIX Key Data	
Max Operating Temp	50°C (112 °F)
Length	13.7m (45 ft)
Width	2.6m (8.5 ft)
Height	4m (13.1 ft)
Max Operating Weight	49,000 kg (108,027 lbs)
Max Inlet Pressure	10 bar (140 psi)
Inlet/Outlet Connector	DN 150 PN 16 (6")
Power Requirements	110V or 240V, 16A
Resin Capacity	Up to 10 million grains

HydropurIX Key Features	
<b>Instrumentation</b> <ul style="list-style-type: none"> <li>• Inlet/outlet conductivity meters</li> <li>• Inlet/outlet pressure</li> <li>• Temperature alarms</li> <li>• Flow rate indicator</li> <li>• Totalising flow meter</li> <li>• Datalogging capability</li> </ul>	<b>Controls</b> <ul style="list-style-type: none"> <li>• Pressure reducing valve</li> <li>• Isolation valves on all vessels</li> <li>• Automatic shutdown system</li> <li>• External audible alarms</li> <li>• Remote monitoring</li> <li>• Remote start up / shut down capability</li> <li>• Emergency pressure relief pop off valve</li> </ul>

Ecolutia operates 24-hours, 365 days a year around the world. With a **superior** fleet set up for **swift deployment** and a **dedicated team** focused on meeting customer needs, Ecolutia can provide you with an **immediate, cost effective** and **superior mobile solution** for your water treatment needs. Whether you are interested in a **rapid response** service to deal with critical issues or you are more likely to deploy a **short or long term solution**, Ecolutia can provide you with the technology and the service that fits.

Speak to your sales representative or contact us at [www.ecolutia.com](http://www.ecolutia.com) to discuss your project's exact requirements and how Ecolutia can find the right service solution.